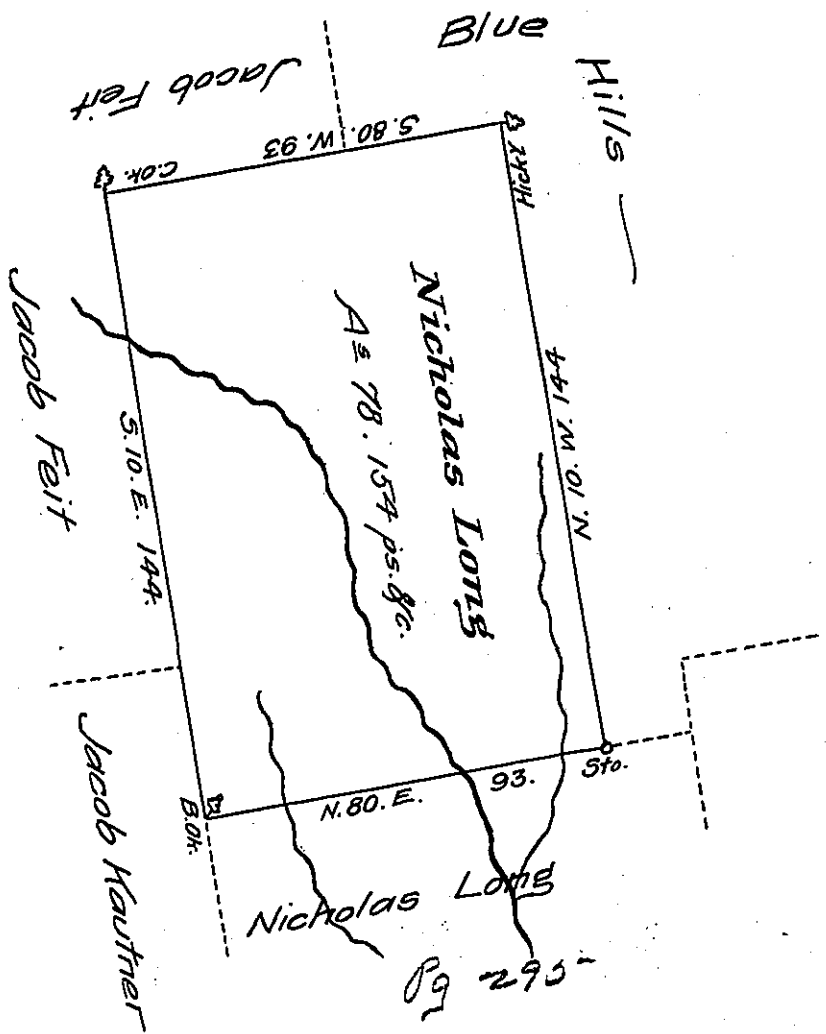


See - M-2



Situate in Tulpehocken township Berks County Containing
 Seventy eight acres, One hundred & fifty four perches and allowance
 of 6 ~~sq~~ Ct. Surveyed in pursuance of an Application N^o 583 dated
 August 21st 1765 granted to Nicholas Long

Copied from Jasper Sculls entries
 October 30th 1828.

Gabriel Hiester, Esquire }
 Surveyor General. }

Matthias S. Richards D.S.

IN TESTIMONY that the above is a copy of the original remaining on file in
 the Department of Internal Affairs of Pennsylvania, made
 conformably to an Act of Assembly approved the 16th day of
 February, 1833, I have hereunto set my Hand and caused
 the Seal of said Department to be affixed at Harrisburg,
 this twenty eighth day of July 1908.

Henry Howard
 Secretary of Internal Affairs.